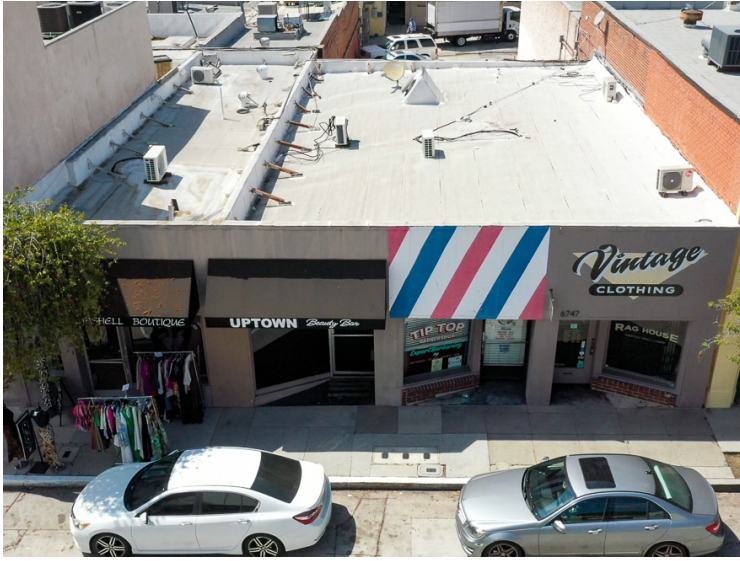


# Retail Property For Sale

**1** 6747-6753 Bright Ave., Whittier, CA 90602



## Property Details

Available	2,661 SF
Sale Price	\$895,000
Price PSF	\$
Lot Size	5,373 SF
Year Built	1922
Zoning	C2UD

## Broker Information

Ben Greer, CCIM 562-762-3104	Dustin Wheelan 562-762-3120
---------------------------------	--------------------------------

## Property Description

GM Properties is pleased to offer a unique opportunity to acquire a small, multi-tenant commercial/retail building in the desirable Uptown Whittier area. Currently, all four (4) units are leased on a month-to-month basis, presenting an ideal value-add opportunity or the potential for an owner-user to secure SBA financing. Recent upgrades include a new 400-amp electrical panel. The property features smaller units that are highly sought after by local small businesses due to their scarcity in the area. Tenant parking is conveniently located at the rear of the building, with eight (8) designated stalls, and the property is adjacent to a large parking structure and additional public parking on both sides, offering excellent accessibility.

