

INDUSTRIAL FOR SALE

16,936 SF Bldg | 2.03 AC Lot



57 FWY + Diamond Bar Adjacent

Cherry Lu

D: 562.762.3108

C: 310.729.2224

cherry@gmpropertiesinc.com

Cal BRE#01925302

Harry Lu

D: 562.762.3118

C: 714.624.6316

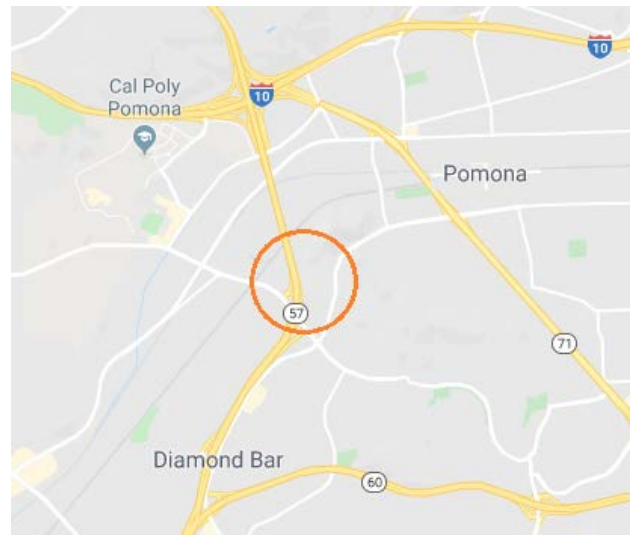
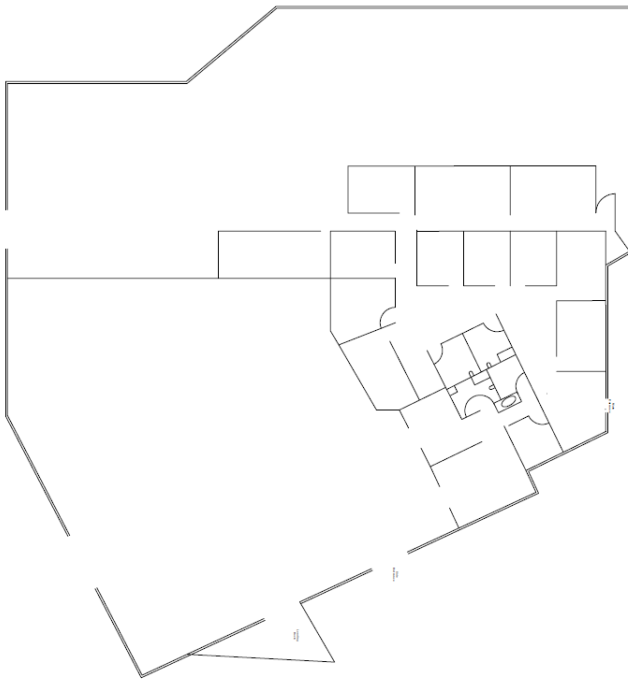
harry@gmpropertiesinc.com

Cal BRE#01352158

GM Properties Inc.

13305 Penn St., Suite 200

Whittier, CA 90602



FOR SALE



GM Properties is pleased to present this rare opportunity to purchase a well apportioned industrial building located at the confluence of four freeways. This stand-alone warehouse unit is zoned for light manufacturing and office uses -- perfect for manufacturing & assembly, import / export, eCommerce, general storage and distribution.

PROPERTY SUMMARY

LOCATION:	Pomona -- Diamond Bar Adjacent
Building Size:	16,936 SF
Lot Size:	2.033 AC
Zoning:	Light Manufacturing (POM2)

PROPERTY HIGHLIGHTS:

- One (1) DH and Two (2) GL Doors
- 16' – 18' Warehouse Clearance
- Wrap-around, Gated Yard
- Fully-sprinklered Throughout

Cherry Lu

D: 562.762.3108
C: 310.729.2224
cherry@gmpropertiesinc.com
Cal BRE#01925302

Harry Lu

D: 562.762.3118
C: 714.624.6316
harry@gmpropertiesinc.com
Cal BRE#01352158

GM Properties Inc.
13305 Penn St., Suite 200
Whittier, CA 90602

