

OFFICE

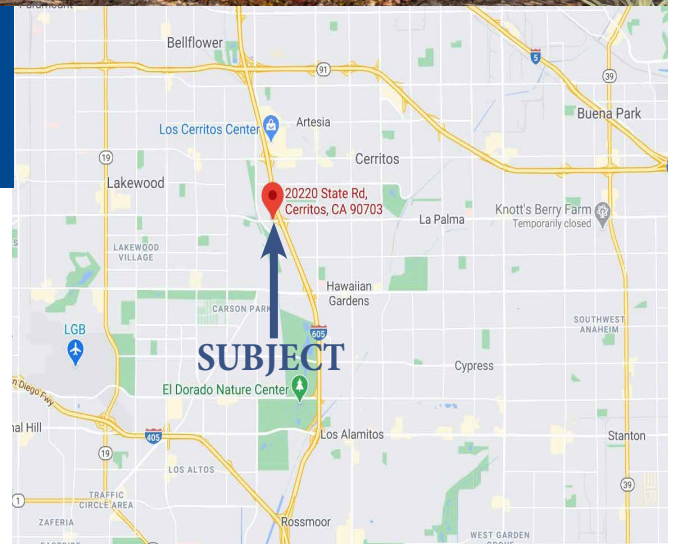
FOR LEASE



20220-20240 STATE ROAD
CERRITOS, CA 90703

Property Features:

- 750-1,962 Square Feet Available
- Window-Lined Offices
- Beautiful, Renovated Office Building
- Abundant Surface Parking Available
- Direct Frontage and Access to I-605
- 218k Cars / Day on I-605, 30k / Day on Del Amo
- Close Proximity to CA-91, I-405 and I-105
- Nearby Cerritos Mall (South Street - 1 Exit North) & Long Beach Town Center (Carson Street - 1 Exit South)
- Strong Demographic: More Than 450k People with \$89k Average Household Income



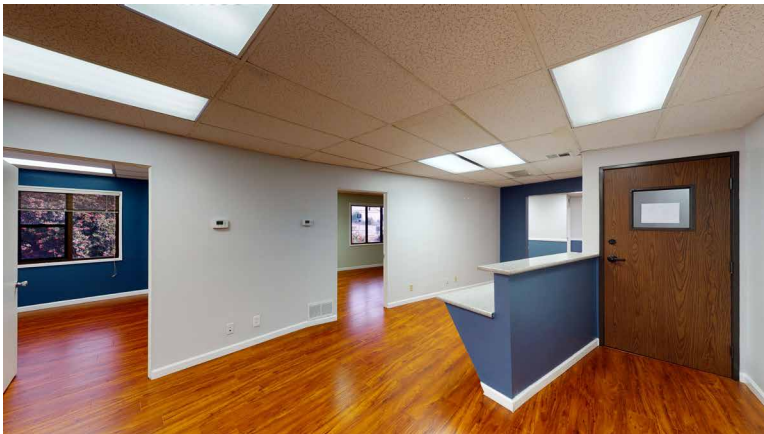
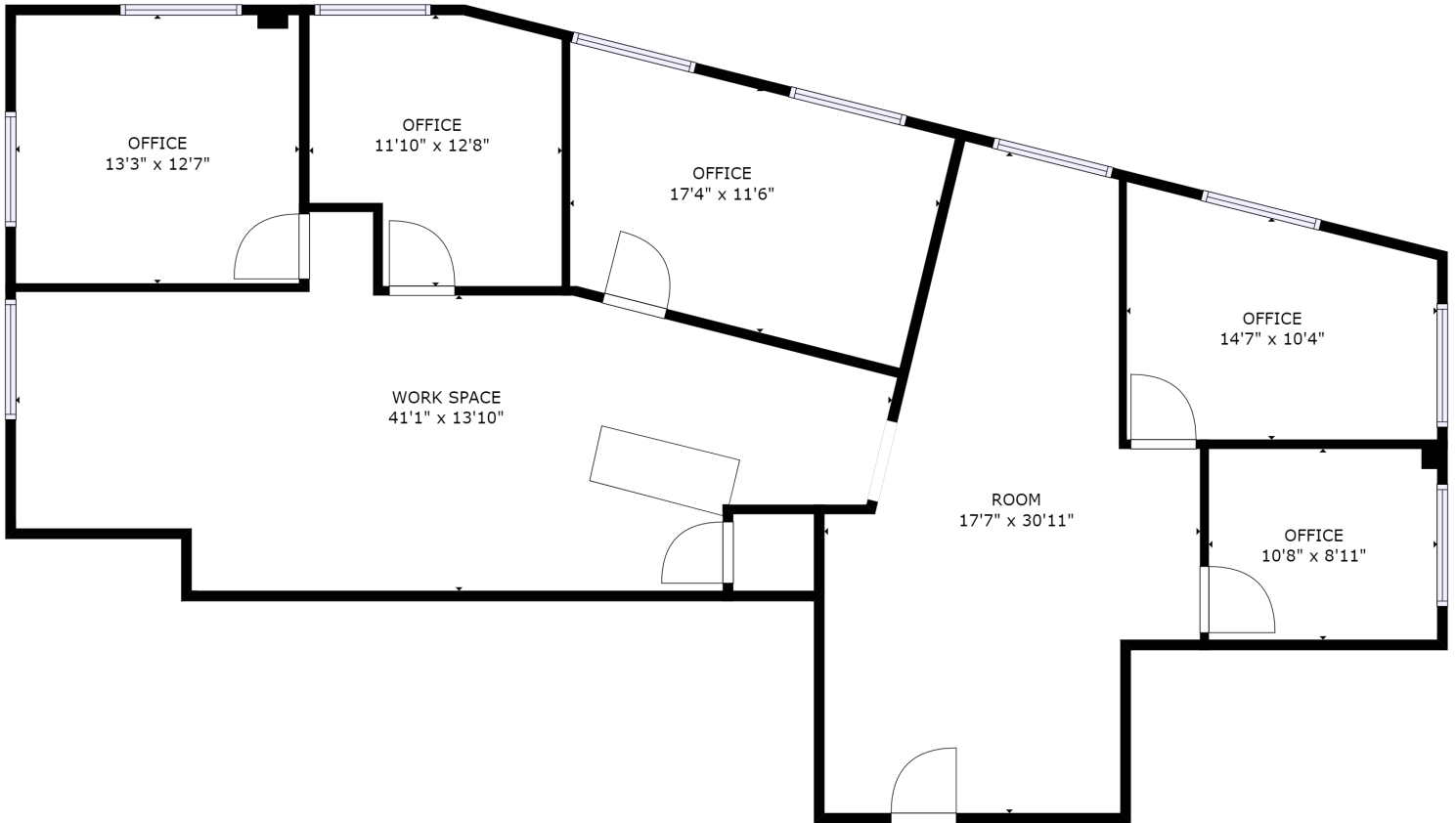
Tyler Portman
Direct: (562) 762 - 3152
tyler@gmpropertiesinc.com

Matt Wagner, CCIM
Direct: (562) 762 - 3140
matt@gmpropertiesinc.com

The information contained herein was obtained from sources we believe to be accurate, but is for information purposes only. Potential tenants and buyers are recommended to verify and perform its own due diligence. GM Properties or the Owner does not represent or warrant any of this information. CalBRE#01238514

OFFICE

FOR LEASE



Tyler Portman
Direct: (562) 762 - 3152
tyler@gmpropertiesinc.com

Matt Wagner, CCIM
Direct: (562) 762 - 3140
matt@gmpropertiesinc.com

The information contained herein was obtained from sources we believe to be accurate, but is for information purposes only. Potential tenants and buyers are recommended to verify and perform its own due diligence. GM Properties or the Owner does not represent or warrant any of this information. CalBRE#01238514