

FOR LEASE

AVAILABLE FEB 1

DOCK-HIGH LOADING

187 PACIFIC STREET

POMONA, CA

**FEATURES:**

- 4,166 SF Warehouse and Office
- Interior Dock-high Loading
- 850 SF Office Space
- 14' - 20' Warehouse Clearance
- Adjacent to 57 Fwy
- Available Feb 1<sup>st</sup>, 2026

**CHERRY LU, MBA**

C: 310.729.2224

O: 562.762.3108

[cherry@gmpropertiesinc.com](mailto:cherry@gmpropertiesinc.com)

**HARRY LU**

C: 714.624.6316

O: 562.762.3118

[harry@gmpropertiesinc.com](mailto:harry@gmpropertiesinc.com)

**GM**   
PROPERTIES



**ADJACENT TO 57 FREEWAY**

**IMMEDIATE ACCESS TO 5-WAY JUNCTION OF 57, 10, 71, AND 60  
FREEWAYS**

**CHERRY LU, MBA**

C: 310.729.2224

O: 562.762.3108

[cherry@gmpropertiesinc.com](mailto:cherry@gmpropertiesinc.com)

**HARRY LU**

C: 714.624.6316

O: 562.762.3118

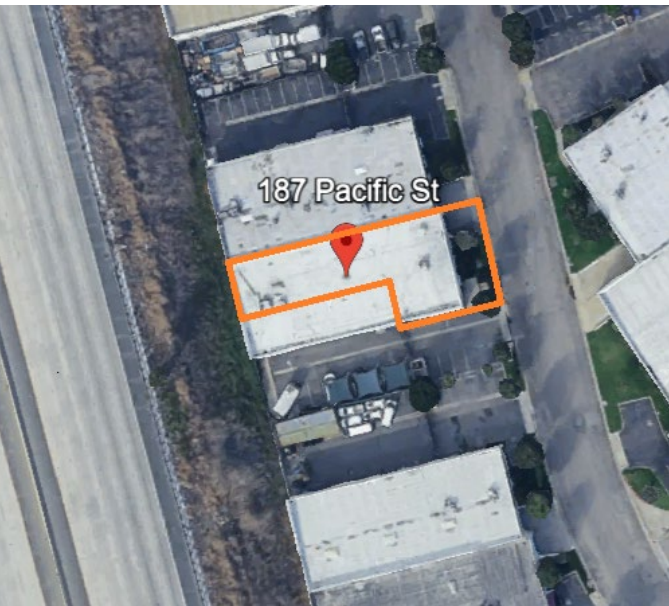
[harry@gmpropertiesinc.com](mailto:harry@gmpropertiesinc.com)

No warranty, expressed or implied, is made as to the accuracy of the information contained herein.

This information is subject to errors, omissions, change of price, sale or other conditions, withdrawal without notice, and is subject to any special listing conditions imposed by our principals. Cooperating brokers, Prospective Buyers and other parties who receive this document should not rely on it, but should use it as a starting point of analysis, and should independently confirm the accuracy of the information contained herein through a due diligence of the books, records, files and documents that constitute reliable sources of the information described herein.



**GM**  
PROPERTIES



**CHERRY LU, MBA**

C: 310.729.2224

O: 562.762.3108

[cherry@gmpropertiesinc.com](mailto:cherry@gmpropertiesinc.com)

**HARRY LU**

C: 714.624.6316

O: 562.762.3118

[harry@gmpropertiesinc.com](mailto:harry@gmpropertiesinc.com)

No warranty, expressed or implied, is made as to the accuracy of the information contained herein. This information is subject to errors, omissions, change of price, sale or other conditions, withdrawal without notice, and is subject to any special listing conditions imposed by our principals. Cooperating brokers, Prospective Buyers and other parties who receive this document should not rely on it, but should use it as a starting point of analysis, and should independently confirm the accuracy of the information contained herein through a due diligence of the books, records, files and documents that constitute reliable sources of the information described herein.

